

## GE Fanuc 90 Series SNP PLC

### HMI Factory Setting:

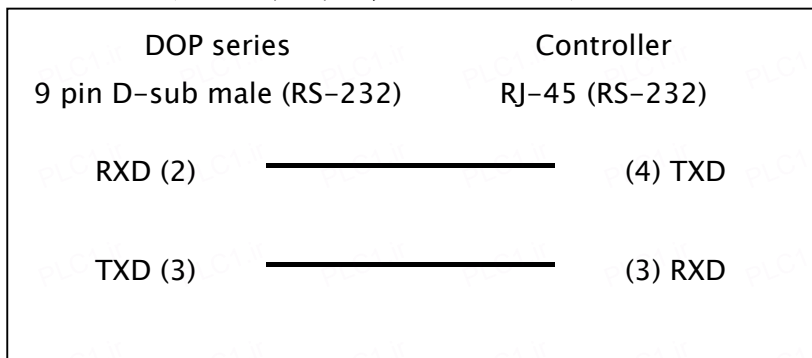
Baud rate: 19200, 8, Odd, 1

Controller Station Number: 0 (no PLC station number in protocol, therefore, only 1(HMI) to 1(PLC) communication is allowed.)

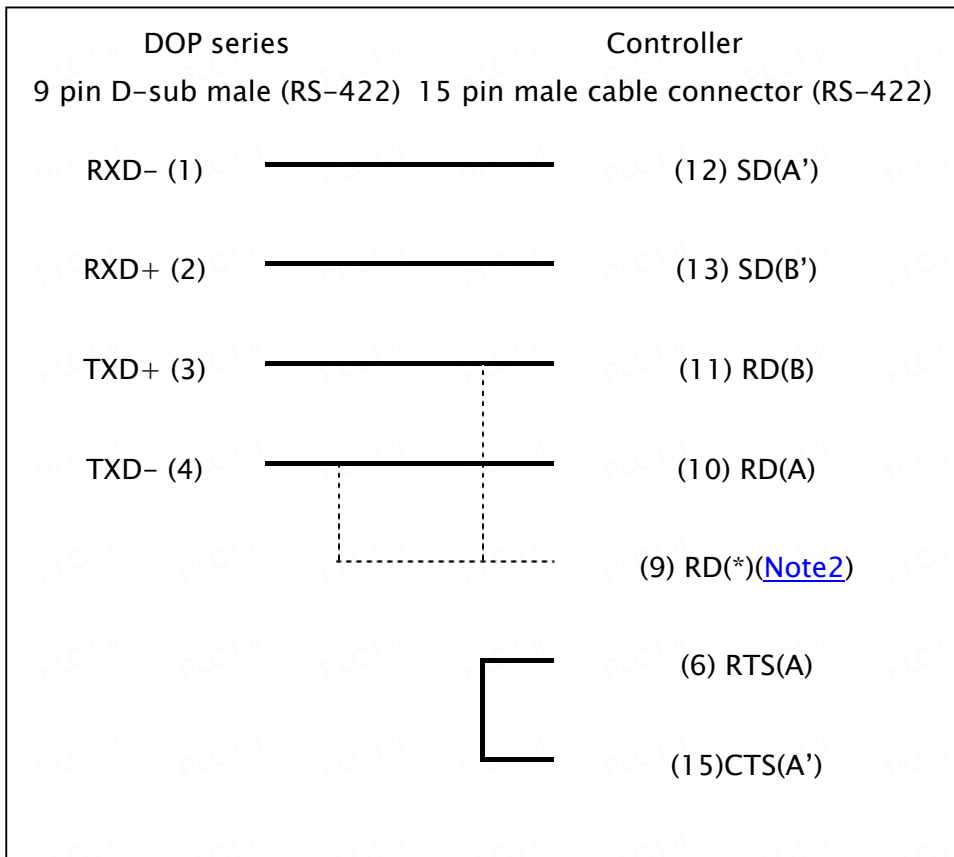
Control Area / Status Area: %R1 / %R10

### Connection

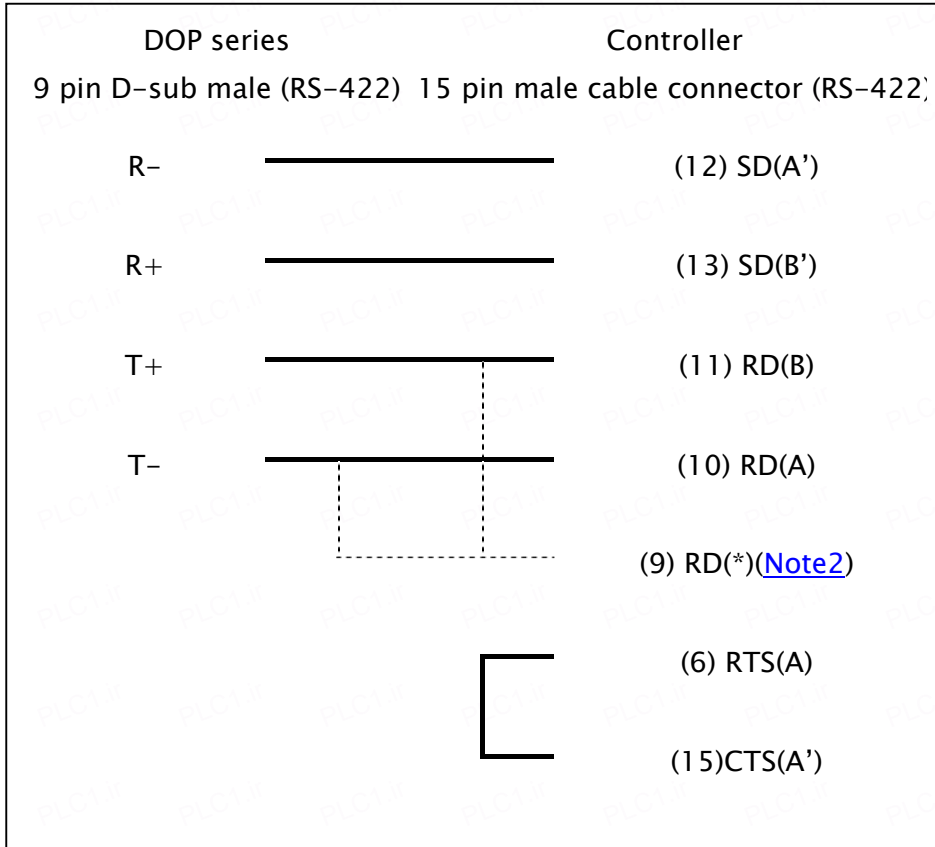
#### a. RS-232 (DOP-A/AE/AS, DOP-B Series)



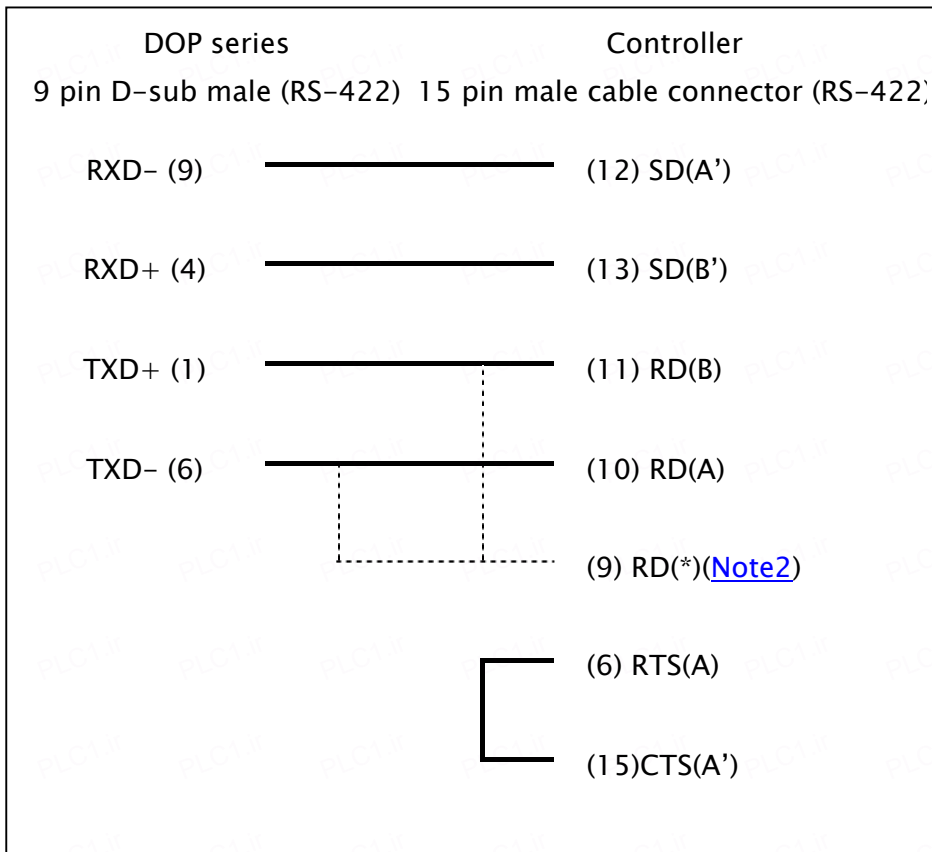
#### b. RS-422 (DOP-A/AE Series)



**c. RS-422 (DOP-AS35/AS38/AS57 Series)**



**d. RS-422 (DOP-B Series)**



**Definition of PLC Read/Write Address**

**a. Registers**

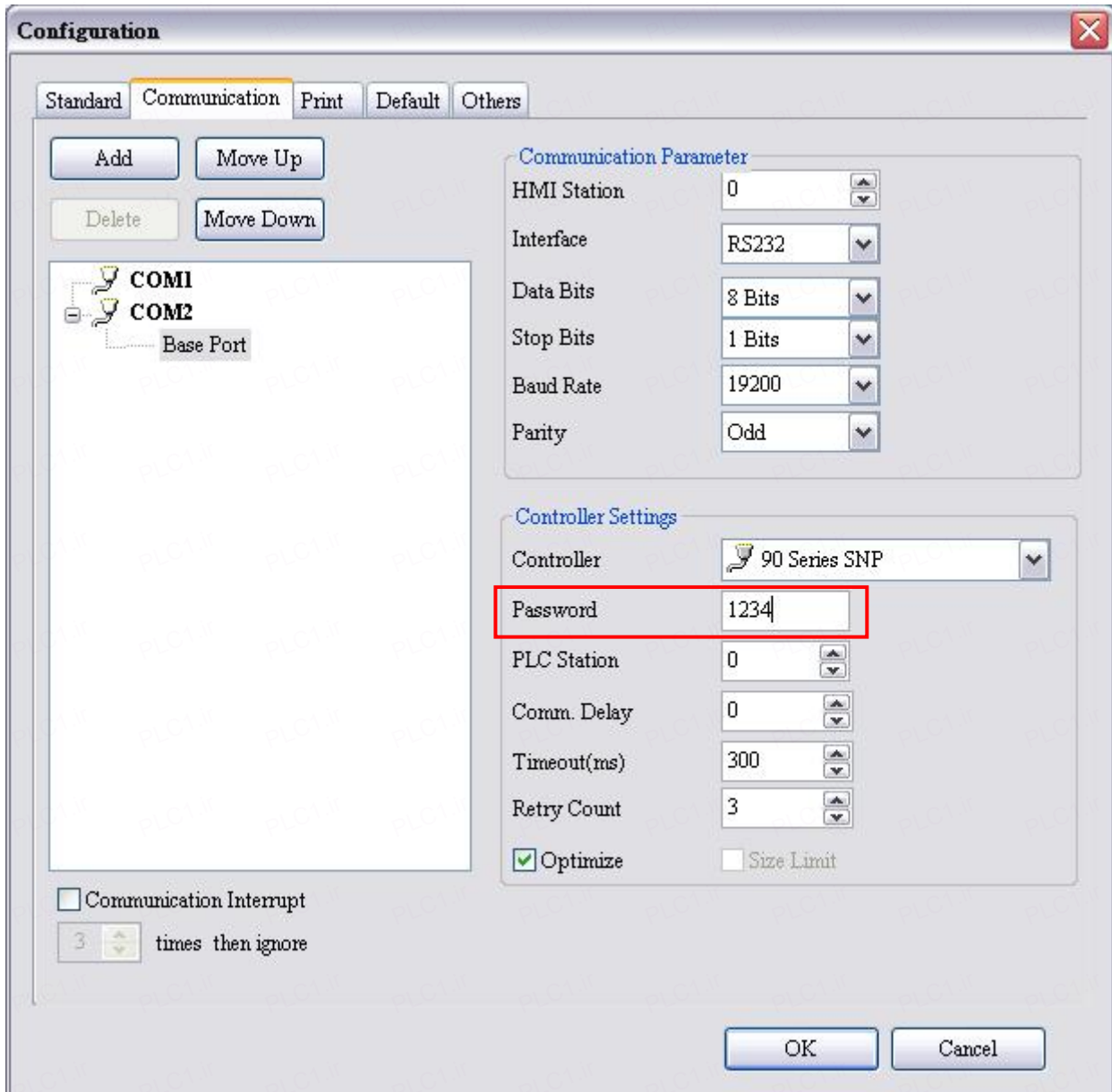
Type	Format	Read/Write Range	Data Length	Note
	Word No. (n)			
Discrete Inputs	%In	%I1 - %I12288	Word	<a href="#">3</a>
Discrete Outputs	%Qn	%Q1 - %Q12288	Word	<a href="#">3</a>
Discrete Temporaries	%Tn	%T1 - %T256	Word	<a href="#">3</a>
Discrete Internals	%Mn	%M1 - %M12288	Word	<a href="#">3</a>
%SA Discrettes	%SAn	%SA1 - %SA128	Word	<a href="#">3</a>
%SB Discrettes	%SBn	%SB1 - %SB128	Word	<a href="#">3</a>
%SC Discrettes	%SCn	%SC1 - %SC128	Word	<a href="#">3</a>
%S Discrettes	%S-n	%S-1 - %S-128	Word	<a href="#">3</a>
Genius Global Data	%Gn	%G1 - %G7680	Word	<a href="#">3</a>
Registers	%Rn	%R1 - %R16384	Word	
Analog Inputs	%AI n	%AI1 - %AI8192	Word	
Analog Outputs	%AQn	%AQ1 - %AQ8192	Word	

**b. Contacts**

Type	Format	Read/Write Range	Note
	Bit No. (b)		
Discrete Inputs	%Ib	%I1 - %I12288	
Discrete Outputs	%Qb	%Q1 - %Q12288	
Discrete Temporaries	%Tb	%T1 - %T256	
Discrete Internals	%Mb	%M1 - %M12288	
%SA Discrettes	%SAb	%SA1 - %SA128	
%SB Discrettes	%SBb	%SB1 - %SB128	
%SC Discrettes	%SCb	%SC1 - %SC128	
%S Discrettes	%S-b	%S-1 - %S-128	
Genius Global Data	%Gb	%G1 - %G7680	

**NOTE**

- 1) If PLC has the “Password Detection” function, please enter 4 digits password under “password” in communication.



- 2) If PLC Series is 90-70 PLC IC697CPU731 and IC697CPU771 then (9) RD(\*) must connect with (11) RD(B). For other series RD(\*) must connect with (10) RD(A).
- 3) The device address must be a multiple of 16 + 1.